

2025.7



Oil Pattern Distance:	42 Feet	Reverse Brush Drop:	42 Feet	Oil Per Board:	50 uL
Forward Oil Total:	12.2 mL	Reverse Oil Total:	9.35 mL	Volume Oil Total:	21.55 mL
Forward Boards Crossed:	244 Boards	Reverse Boards Crossed:	187 Boards	Total Boards Crossed:	431 Boards

	Start	Stop	Loads	Speed	Crossed	Start	End	Feet	T.Oil
1	4L	4R	1	10	33	0.0	0.0	0.0	1650
2	5L	5R	1	14	31	0.0	1.9	1.9	1550
3	7L	7R	2	18	54	1.9	7.0	5.1	2700
4	9L	9R	2	18	46	7.0	12.1	5.1	2300
5	9L	9R	2	22	46	12.1	18.3	6.2	2300
6	12L	12R	2	26	34	18.3	25.6	7.3	1700
7	2L	2R	0	26	0	25.6	42.0	16.4	0

Conditioner:
Type In or Select One

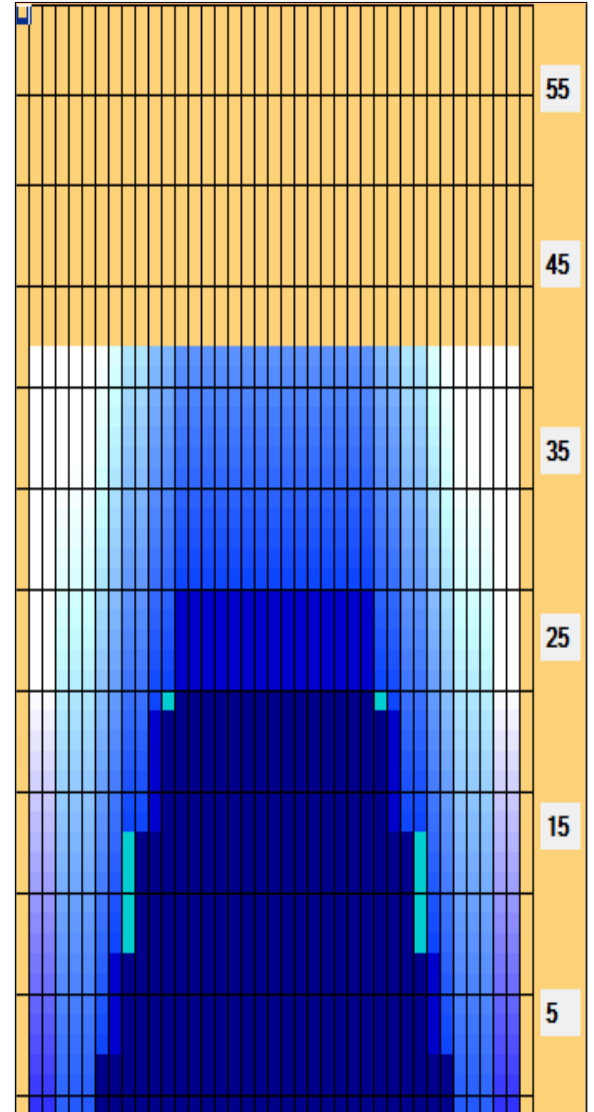
TransferType:
Type In or Select One

Forward
Reverse
Combined
Buff

Forward Reverse More

	Start	Stop	Loads	Speed	Crossed	Start	End	Feet	T.Oil
1	2L	2R	0	22	0	42.0	30.0	-12.0	0
2	13L	13R	2	22	30	30.0	23.8	-6.2	1500
3	11L	11R	2	22	38	23.8	17.6	-6.2	1900
4	10L	10R	2	18	42	17.6	12.5	-5.1	2100
5	8L	8R	2	18	50	12.5	7.4	-5.1	2500
6	7L	7R	1	14	27	7.4	5.5	-1.9	1350
7	2L	2R	0	14	0	5.5	0.0	-5.5	0

Forward Reverse More



Item	3L-7L:18L-18R	8L-12L:18L-18R	13L-17L:18L-18R	18L-18R:17R-13R	18L-18R:12R-8R	18L-18R:7R-3R
Description	Outside Track:Middle	Middle Track:Middle	Inside Track:Middle	Middle:Inside Track	Middle:Middle Track	Middle:Outside Track
Track Zone Ratio	9.5	1.51	1	1	1.51	9.5

