

# 2025.6



Oil Pattern Distance:	44 Feet	Reverse Brush Drop:	36 Feet	Oil Per Board:	50 uL
Forward Oil Total:	13.85 mL	Reverse Oil Total:	8.8 mL	Volume Oil Total:	22.65 mL
Forward Boards Crossed:	277 Boards	Reverse Boards Crossed:	176 Boards	Total Boards Crossed:	453 Boards

	Start	Stop	Loads	Speed	Crossed	Start	End	Feet	T.Oil
1	4L	4R	1	10	33	0.0	0.0	0.0	1650
2	5L	5R	1	14	31	0.0	1.9	1.9	1550
3	7L	7R	3	18	81	1.9	9.5	7.6	4050
4	9L	9R	3	18	69	9.5	17.1	7.6	3450
5	10L	10R	2	22	42	17.1	23.3	6.2	2100
6	10L	10R	1	26	21	23.3	26.9	3.6	1050
7	2L	2R	0	26	0	26.9	40.0	13.1	0
8	2L	2R	0	30	0	40.0	44.0	4.0	0

Conditioner:  
Type In or Select One

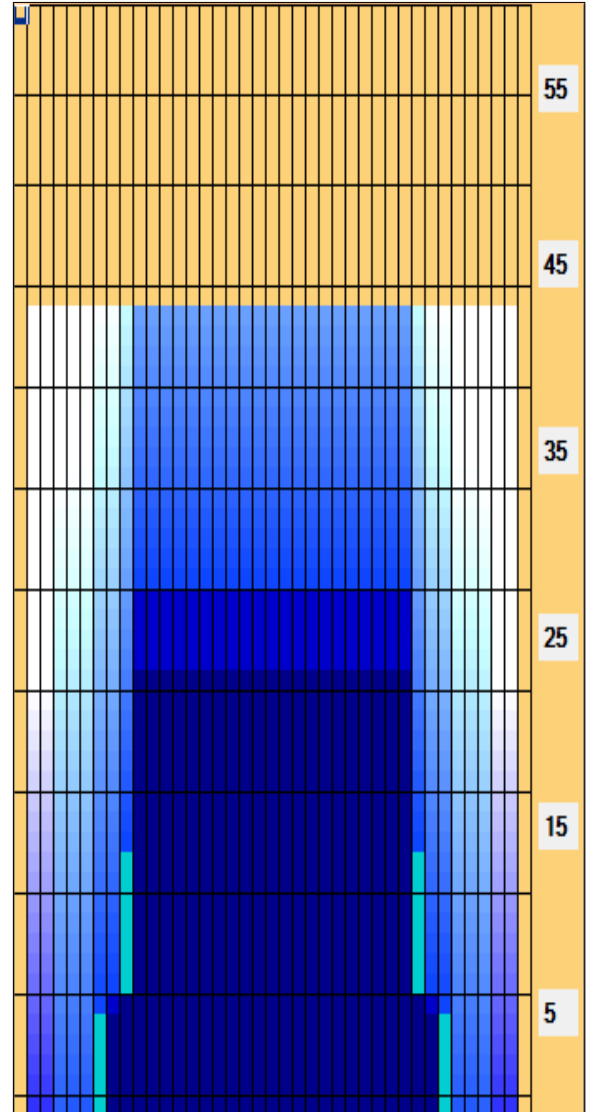
TransferType:  
Type In or Select One

Forward  
Reverse  
Combined  
Buff

Forward Reverse More

	Start	Stop	Loads	Speed	Crossed	Start	End	Feet	T.Oil
1	2L	2R	0	30	0	44.0	30.0	-14.0	0
2	10L	10R	3	26	63	30.0	19.0	-11.0	3150
3	10L	10R	2	22	42	19.0	12.8	-6.2	2100
4	10L	10R	1	18	21	12.8	10.3	-2.5	1050
5	8L	8R	2	14	50	10.3	6.4	-3.9	2500
6	2L	2R	0	10	0	6.4	0.0	-6.4	0

Forward Reverse More



Item	3L-7L:18L-18R	8L-12L:18L-18R	13L-17L:18L-18R	18L-18R:17R-13R	18L-18R:12R-8R	18L-18R:7R-3R
Description	Outside Track:Middle	Middle Track:Middle	Inside Track:Middle	Middle:Inside Track	Middle:Middle Track	Middle:Outside Track
Track Zone Ratio	9.5	1.28	1	1	1.28	9.5

